

## Standard Preparation 1100 mm Work Table with Upstand

ITEM # \_\_\_\_\_

MODEL # \_\_\_\_\_

NAME # \_\_\_\_\_

SIS # \_\_\_\_\_

AIA # \_\_\_\_\_

**133232 (TG1110N)**Work table with 100mm  
upstand, 1100 mm

### Short Form Specification

**Item No.** \_\_\_\_\_

The 50mm high worktop in 304 AISI stainless steel, 1mm in thickness, has upturned edges and incorporates a layer of sound deadening, waterproof and fireproof material. Integral radiused rear upstand, h=100mm. Square section legs 40x40mm on 1" height-adjustable feet in 304 AISI stainless steel.

### Construction

- 100 mm upstand with 8 mm radiused corner and 13 mm deep, designed to be used against a wall.
- 50 mm worktop in 304 AISI stainless steel, 10/10 in thickness with upturned edges and reinforced waterproof underpanel, incorporates a layer of sound deadening materials.
- Square section legs and 40 mm height-adjustable feet in 304 AISI stainless steel.
- Table top slots into legs without using screws to facilitate installation.
- 400 or 600 mm wide single drawer, chest of 4 drawers, lower shelf, three-sided underframe and set of castors as alternative to the feet, can be fitted as optional on all work tables.
- 40 mm-thick lower shelf (available as optional accessory on some models) slots easily into place at a height of 200 mm from the floor. Lower shelf is compulsory to install the chest of drawers.

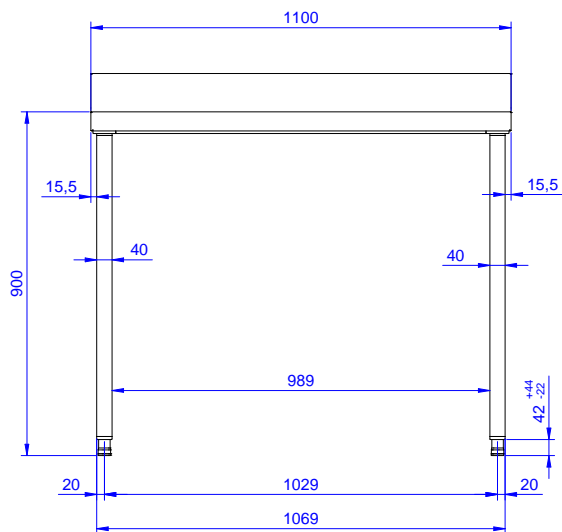
### Optional Accessories

- Set of 4 wheels (2 with brake) PNC 855150 ☐  
d. 100mm for tables and sinks  
(total height on wheels= 993 mm)
- Single drawer GN 1/1, 400mm PNC 855280 ☐
- Single drawer, 600mm PNC 855281 ☐
- Additional drawer, 600mm (to PNC 855295 ☐  
set up a chest of 2, 3, 4 drawers)
- Additional drawer GN 1/1, PNC 855298 ☐  
400mm (to set up a chest of 2, 3, 4 drawers)
- Lower shelf for 1100 mm tables PNC 855349 ☐  
and sinks
- 3-sided underframe for PNC 855356 ☐  
1100mm tables
- Floor fastening kit for 2 square PNC 865386 ☐  
legs

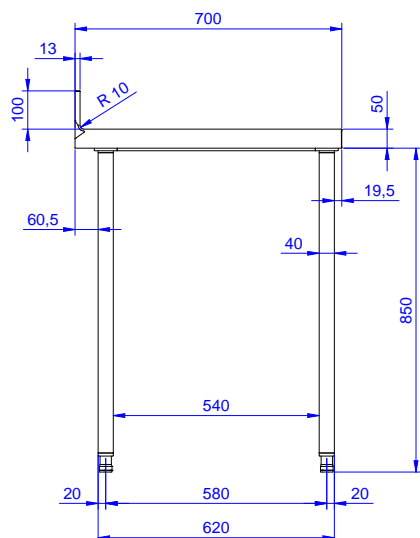
**APPROVAL:** \_\_\_\_\_

## Standard Preparation

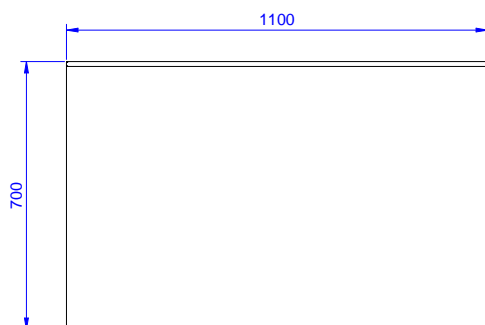
## Front



## Side



**Top**



### Key Information:

### External dimensions, Width:

**133232 (TG1110N)** 1100 mm

**External dimensions,  
Depth:**

700 mm

**External dimensions,  
Height:**

1000 mm

### Upstand Dimensions, Height:

100 mm

**Upstand Dimensions,  
Depth:**

13 mm

### Upstand Dimensions, Radius:

R=8

**Worktop thickness:**

50 mm

**Net weight:**

30.6 kg